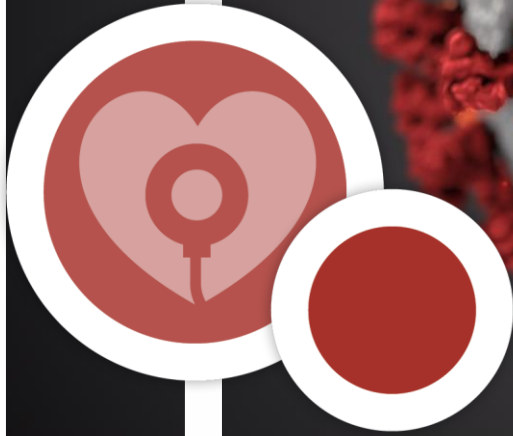


## Public Communication for ALL Audiences



# Coronavirus Disease – COVID 19

### **MASK & SCREENING MANDATES REINSTATED PER CMS REQUIREMENTS**

In accordance with CMS (Centers for Medicaid and Medicare Services) requirements, Midland Health has updated mask and screening guidelines for visitors, patients and staff, effective at 5:00 am on Thursday, June 10, 2021.

Every visitor who enters the facility will be screened for symptoms with questions listed in the screening process at entrances to the facility. No one who is currently experiencing illness symptoms (fever, sore throat, cough, or shortness of breath) will be permitted to visit patients.

All support persons coming to the hospital will be screened and need to have a face covering, such as a mask, scarf, or other fabric covering their nose and mouth. Support persons will be required to wear a face covering at all times while in the building, perform frequent hand hygiene, and restrict their visit to only the patient's room as much as possible. While visiting a patient, visitors may remove their mask while maintaining social distancing and not interacting with staff.

Any support person refusing to or unable to wear a face covering will not be permitted in the building or will be required to leave if already in the building.

Visitors may leave the patient room to get food/refreshments as needed from the Market or Giftshop but should limit this as much as possible. Visitors may also leave the building as needed, but it is strongly encouraged to limit travel as much as possible to lower the risk of disease transmission.

We appreciate your cooperation and understanding. We will continue to monitor evolving federal regulations and adjust our policies and practices accordingly.

