



midland memorial hospital

Newsletter
Medical Staff

Medical Staff Services are the foundation of a solid, well governed medical staff that prides themselves in providing Midland Memorial Hospital and its customers with the highest quality of patient care possible.

Have You Taken The Pickle Pledge?

"I will turn every complaint into either a blessing or a constructive suggestion."

By taking the pickle pledge, I am promising myself that I will no longer waste my time and energy on blaming, complaining, and gossiping, nor will I commiserate with those who steal my energy with their blaming, complaining, and gossiping.

www.joetye.com

Introducing Our New Practitioners

August 2014

Ravi Borra, MD—Internal Medicine/Endocrinology
Indira Donepudi, MD—Internal Medicine/Gastroenterology
Shelley Blancett, PhD—Psychology

Scott Pilgrim, MD—Pediatric Cardiology
Steven Rivas, DDS—Hospital Dentistry



Volume 2, Number 8

**August
2014**

Continuing Medical Education

August 20th — 'Antimicrobial Stewardship: A Systemic Format for Preventing Infection and improving the Care of Infected Patients' by John F. Trowbridge, MD, CPE

August 25th—'Supporting Breastfeeding when Challenges Occur' by Emma A. Omoruyi, MD, MPH, FAAP

New CME guidelines require CME programs represent needs assessments either in the hospital or your clinical settings. The CME Committee is requesting your input on future programs that would benefit your clinical needs and/or challenges. Please submit all your requests directly to Rebecca Pontaski.

The new ACCME requirements represent a sea of change in how CME providers must plan, develop, implement, and document CME activities. Therefore, you will be held accountable for your pre/post knowledge of the subject by completion of a pre and post test.

Preparing for ICD-10—Physician Education Opportunity

Please go to the MMH website—www.midland-memorial.com, under 'For Physicians', Preparing for ICD-10, for information on ICD-10 training through 3M. Notify Rebecca Pontaski, Medical Staff Manager if you would like a login.

Medical Staff Services Reminders

- On the new Midland Memorial Hospital webpage, under 'Find a Physician' is a listing of all physicians on staff. Please review your information for accuracy and notify the medical staff office of any changes.
- Texas Electronic Registrar (TER) Death Registration System—Since 2007, state law requires that all cause-of-death information and medical certifications to the DSHS be submitted electronically. Physicians who do not sign death certificates in a timely fashion face a \$500 fine per violation from the TMB.
- The credentialing information for new applicants to MMH is now updated on the MMH webpage under 'For Physicians'. This includes information for both physicians and AHP's.

In Addition

If you would like to submit information for future newsletters, please email the information to Rebecca Pontaski at rebecca.pontaski@midland-memorial.com.

Medical Staff Leadership

Chief of Staff
John Dorman, MD

Chief of Staff Elect
Sari Nabulsi, MD

Past Chief of Staff
Larry Wilson, MD

**Department Chairs
Hospital-Based Services**
Steven Rea, MD

Medical Services
Larry Oliver, MD

Surgical Services
Jeffrey Durgin, MD

Rebecca Pontaski, MHA, CPMSM, CPCS, RHIT
Medical Staff Services Manager
432-221-1625

Alma K. Martinez, RHIT
Medical Staff Services Coordinator
432-221-1510

Esther Griego
Medical Staff Assistant
432-221-4629

Medical Staff Office Fax 432-221-4253

CME Hotline 432-221-1635



New Information

Joe Tye Returns to Midland Memorial Hospital

The few physicians that have taken the time to sit in on one of his sessions know about his observations and the statistics he has been able to develop from surveys of our employees at MMH.

Essentially we have a very solid employee base at Midland Memorial. Unfortunately we do not have a culture with direction and focus on the values we all desire to share. In fact, we do not have a recognized set of values to provide the compass to get us moving toward the same set of goals.

We do recognize that patient care is what we do, but somehow when at work the majority of the employees feel that unproductive behavior interfere with achieving the level of care we can and should provide our patients. Joe challenged Midland Memorial to develop a set of values to achieve our goals.

As Physicians that utilize Midland Memorial Hospital, we will benefit from our hospital with employees that are culturally aligned. Staff that has values and goals that are zeroed in on safe high quality patient care provided in well-coordinated, cost effective fashion.

Joe Tye's challenge to us is to recognize that as physician we are leaders. As leaders we can help promote the cultural alignment that he and our hospital leaders hope to achieve. How can we help get the transformation started? Watch for Joe Tye's next visit and attend one of his sessions. He hopes to reach out to more of the medical staff. Get a copy of "The Florence Prescription" and read it. As Dr. Sari Nabulsi said, "it is fast read that will help you understand the values that can align us with our goals of high quality, cost effective health care". Ask the Medical Staff Office for a copy of the book.

These are challenging times. We all recognize that they are. The question we have to ask ourselves is can we help find solutions for our community and our hospital? The choice is simple are we going to be part of the solution for Midland Memorial, or not? Joe Tye will be back at Midland Memorial in late August, please take an hour and listen to him. Help us lead the way at Midland Memorial Hospital.



Quick Guide to H&P Guidelines Per CMS 2014 Requirements

- Must be on chart before surgery.
- H&P has to be written within 30 days of procedure.
- H&P Update is needed if H&P was started at any time before patient was admitted to hospital. Update is still needed even if the H&P is signed the morning of surgery.
- NP and PA can do H&P and Update, but both have to be signed by MD before procedure.
- Any and all H&Ps, and Updates, must be dated, timed, and signed.
- Updates may be under the title of Progress Notes.
- For emergencies, no H&P required preop, however a short description of planned procedure must be in ProgressNote prior to procedure.
- If the patient comes from the ER, the ER MDs assessment can be used as the H&P.
- For inpatients, there must be an initial H&P within 24 hours of admission, with daily progress notes, and with a note that indicates the patient is having surgery. No update is needed.
- The initial H&P can be written by a medical doctor.
- Dentists cannot write the H&P. It must be written by a medical doctor.
- H&P must be written by MD/DO/NP/PA that has privileges to work in the hospital.

Shadowing/Observing Requirements

It is peak season for students and others who want to come in and observe practitioner work. Anyone who will be observing a practitioner needs to complete and provide some information before they are able to do so. Please contact the medical staff office at 432-221-4629 for this information and process.

Bylaws Update

Utilize <http://www.midland-memorial.com/for-physicians/default.aspx> for the most updated information on your Bylaws and Rules and Regulations. Changes were made to Article X, Departments and Sections. Changes will be effective August 1st.




CareVue to replace EDITH

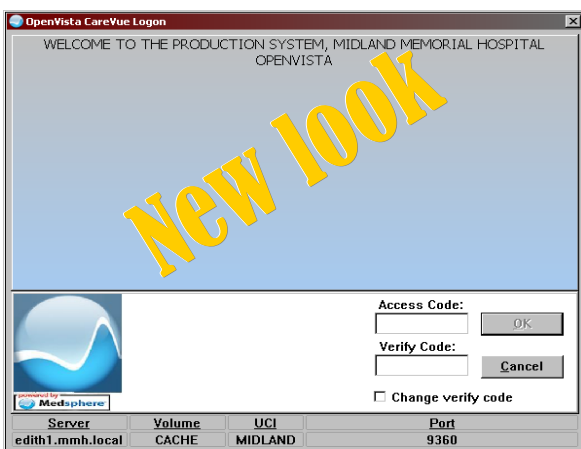
* Official Announcement * Physicians & Physician Offices

The current version of our Electronic Medical Record "EDITH" will be *discontinued* on **July 1st (2014)**

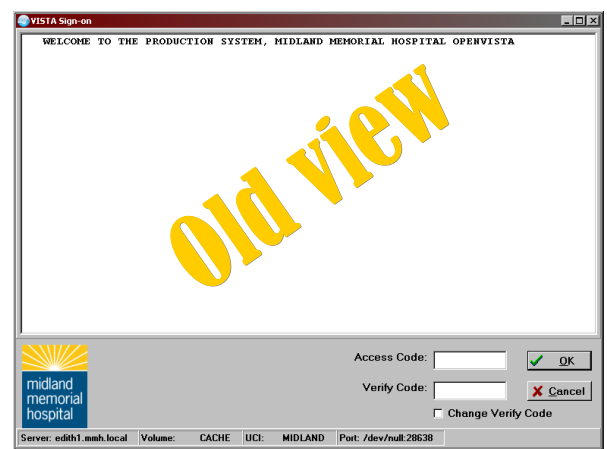
Starting today, all physician and office PC's that are currently using EDITH should upgrade to CareVue with these steps.

- Launch your VPN connection to Midland Memorial Hospital
- Type this link address in your Internet Explorer address bar: " \\Mmhupdate\CareVue\CareVue_Icon "
- Copy the CareVue icon  to your pc desktop: (1) double click the icon to start the upgrade (2) log in to CareVue to complete the update. *Normally, this will take from 20 –30 minutes to complete.* Please note that your current "verify" and "access" codes will remain the same. *Don't hesitate to contact our Help Desk if you experience any issues with your update.*

CareVue Training Tutorial is available at this link: " \\Mmhupdate\CareVue\CareVue_Icon\VistaCareVue.ppsx "



If your office does not have VPN connectivity, please contact the HIS Help Desk (432) 221-4040



Help Desk
Hospital Information Systems
432-221-4040